



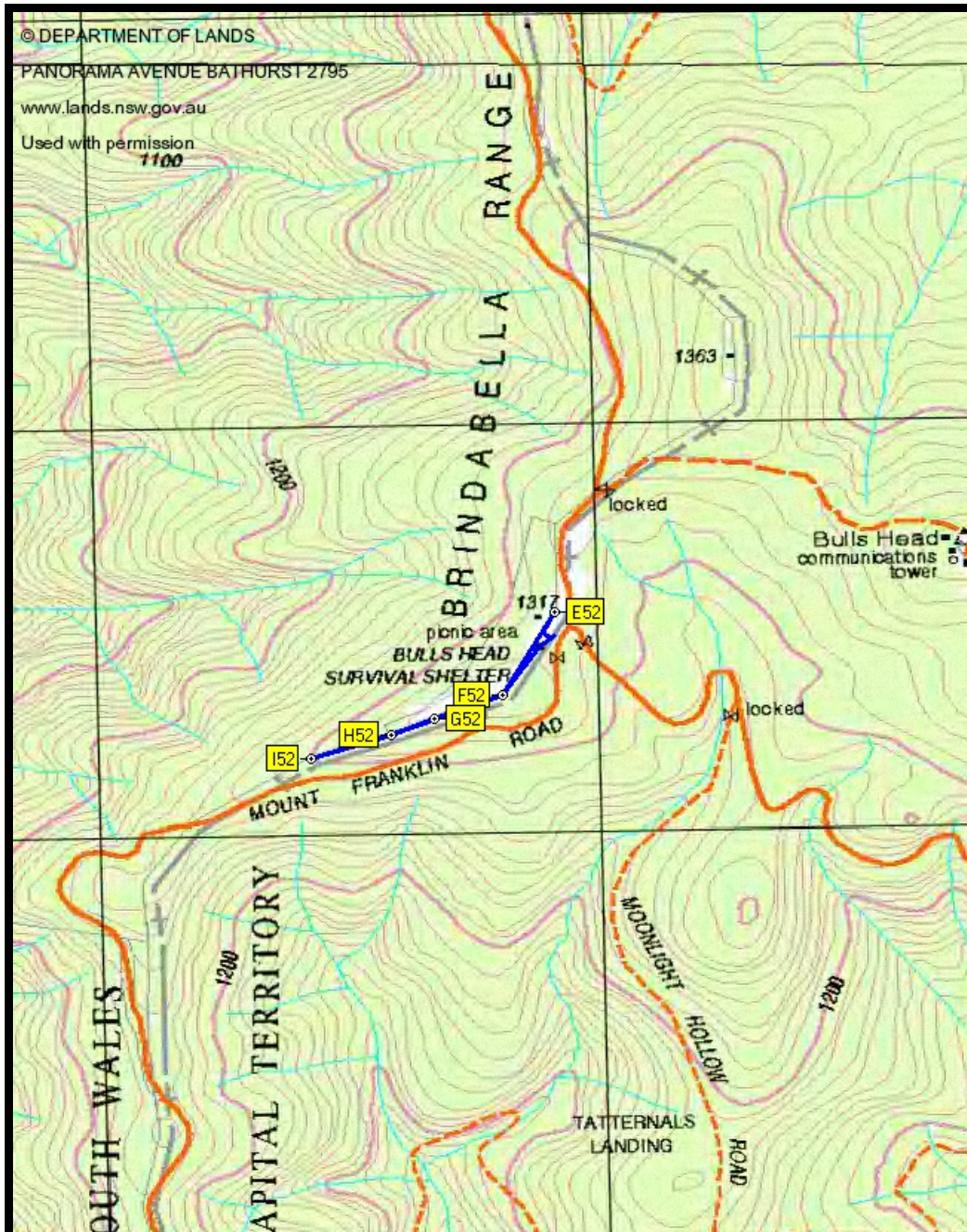
100
CANBERRA

SHOW US YOUR LIMITS



Mt Franklin Talk and Walk Sunday 2 May 2010

Walk 5 - (drive 16.2km on the way home to Bulls Head shelter) Around Bulls Head picnic area



Distance: 1.3km return Climb: 30m.

See border markers E52, G52, H52 and I52. Come again some time and have a picnic.